

**A new generation
Trendsetting**



► **Underground System GeoTainer® Model GTS-L**



Innovation - Construction - Production

Bauer GmbH not only develops and manufactures attachments for forklift trucks, products for the environmental sector and recycling and waste containers, the company also sells their own products on international markets.

Founded in 1966 by Heinz Dieter Bauer, today the company is one of the leading manufacturers in Europe.

Qualified personnel and the use of the most modern manufacturing technology available guarantee our products meet the highest standards where safety and quality are concerned. In 1993 the company was certified for the first time according to DIN EN ISO 9001; the implementation of this quality assurance management system guarantees consistent high quality "made by BAUER".

Bauer products are only manufactured on the company sites in Suedlohn and Halberstadt. The certificate issued by the German Institute for Sustainability and Economy documents our company's commitment to sustainability, ecology and social responsibility.



990 tonnes CO₂ savings
per year thanks to our photovoltaic power systems



A selection of locations for reference - Underground Systems

DE-Baden-Baden	DE-Hamburg	DE-Niederkassel	FR-Reims	SE-Berja
DE-Bad Honnef	DE-Hennef	DE-Norderstedt	FR-Versailles	SE-Göteborg
DE-Bochum	DE-Hannover	DE-Recklinghausen	GR-Athen	SE-Stockholm
DE-Bonn	DE-Kassel	DE-Rendsburg	IL-Ashdod	NO-Borgheim
DE-Braunschweig	DE-Kleve	DE-Rhede	LT-Svencionys	NO-Horten
DE-Bremen	DE-Kiel	DE-Troisdorf	MT-Valetta	NO-Kongsberg
DE-Darmstadt	DE-Krefeld	DE-Wismar	NL-Assen	
DE-Duisburg	DE-Köln	AT-Graz	NL-Den Dolder	
DE-Düsseldorf	DE-Lübeck	CH-Thurgau	NL-Texel	
DE-Freiburg	DE-Möln	DK-Skanderborg	PL-Sopot	
DE-Hagen	DE-Münster	FR-Lille	PL-Czerwionka-Lesczyn	

Our Recycling and Waste Material Containers not only comply with German standards and regulations they distinguish themselves by setting new standards.

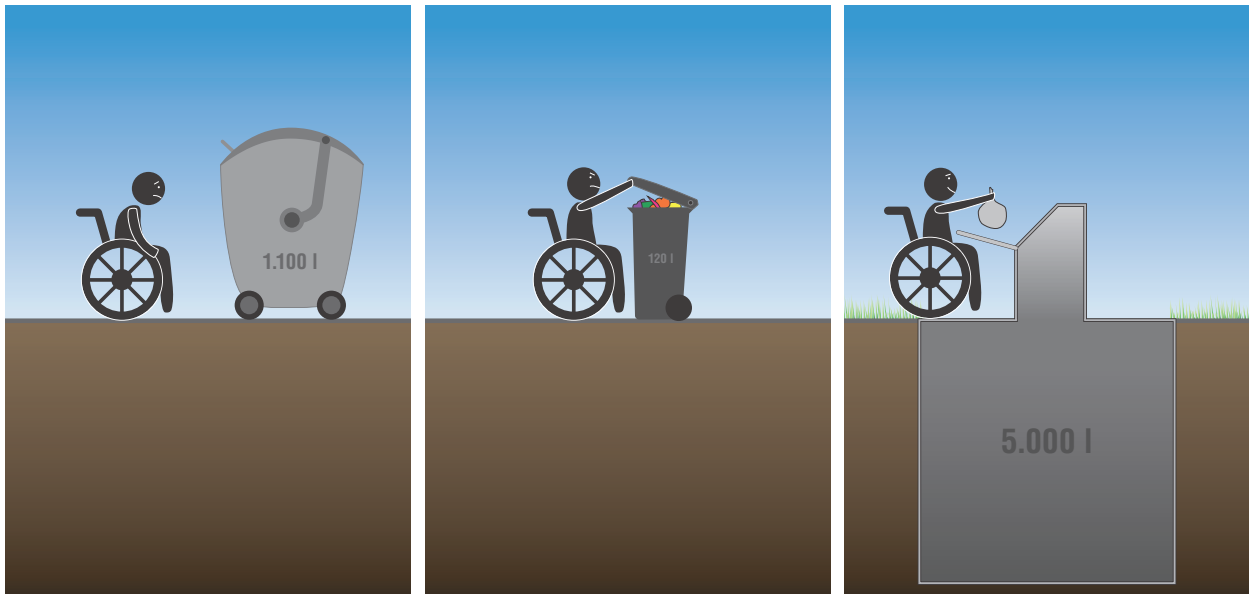


2. Introduction

Consumers are more accepting of separate waste collection i.e. glass, paper, residual waste etc. than ever before. This readiness combined with the high demands made of modern urban development concepts means new requirements are also made of waste collection systems. They must be compatible with waste disposal habits and local conditions in order to avoid the negative effects we are only too familiar with - problems resulting from overflow, an obstructed view, litter or noise pollution and more frequent emptying.

The system behind the underground range of model GTS-L is particularly well-suited to meet the new requirements and also brings benefits to all those involved.





Salient characteristics that are convincing

- No barriers!
 - Low-level deposit - easy access for children, wheelchair users and the elderly
 - Ground level installation: no risk of stumbling, safe access for wheelchair users and those dependent on a walking aid
 - The column can be marked using Braille or bas relief for identification by the blind or visually impaired
- Magnet holder on filling chute enables one-handed use
- Easily blends into any surroundings. Collection points look be
- It's cooler underground! More hygienic; no nasty smells or problems with vermin - even on hot summer days
- Large collection volume ranging from 2 m³ - 5 m³, less frequent emptying
- Less space required - more space becomes available for better use
- OMO emptying: labour-saving, cost-effective
- People are far less likely to dirty collection areas that are kept clean
- No obstruction to view
- Trap doors are opened/closed using a traverse leverage system rather than chains i.e. carefully controlled movement
- Basin-like trap doors retain any remaining liquid

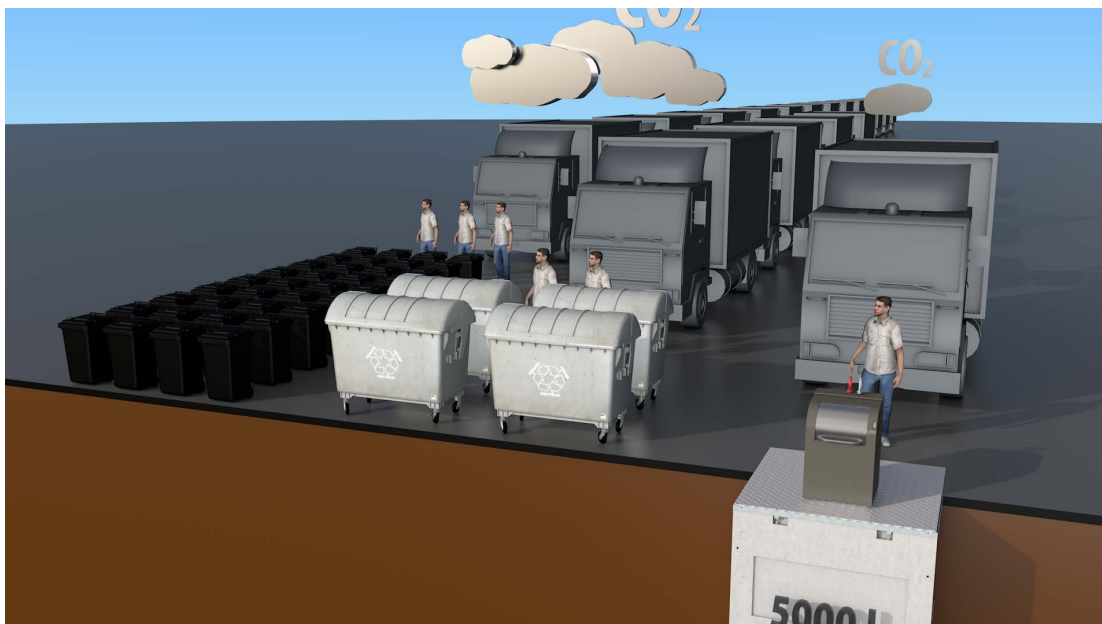
Why choose the GTS-L?

- The collecting container is easy to empty - the traverse/leverage system on the outside and smooth interior walls ensure it is emptied thoroughly every time



- Large collecting volume
 - > fewer tours for collection vehicles
 - > less CO₂ emissions or fine dust pollution
 - > one man operation by crane
 - > logistic costs optimisation

Total Cost of Ownership (TCO)
These advantages have a positive impact on the running costs and also on total lifetime costs



- Simple maintenance - any damaged parts can be easily replaced as the construction is screwed together

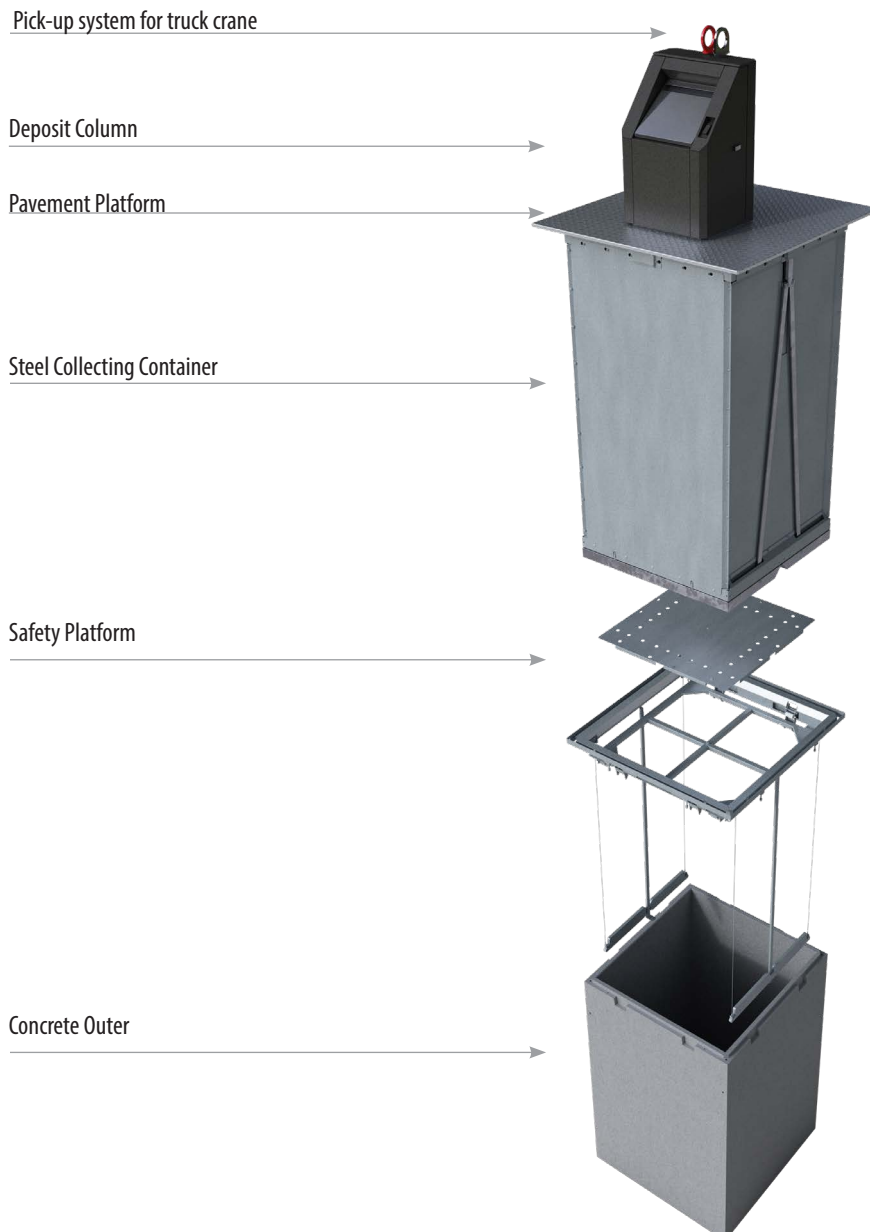


▶ Underground System GeoTainer® Model GTS-L



- 3. Technical Details
- 3.1. An Overview of the System

		▶ GTS-L 2,0	▶ GTS-L 3,0	▶ GTS-L 4,0	▶ GTS-L 5,0
Useable volume	(approx. in m ³)	2,36	3,23	4,2	5,17
Overall height (collecting container and deposit column) (not incl. pick-up)	(approx. in mm)	2680	2680	3180	3680
Built-in dimensions (w x d x h)	(approx. in mm)	1780 x 1780 x 1895	1780 x 1780 x 1895	1780 x 1780 x 2395	1780 x 1780 x 2895
Weight Concrete outer	(approx. in kg)	3840	3840	4630	5400
Weight / load capacity safety platform	(approx. in kg)	225 / 200	225 / 200	227 / 200	230 / 200
Weight steel collecting container	(approx. in kg)	720	640	700	760
Total weight	(approx. in kg)	4785	4705	5557	6390



3. Technical Details
- 3.2. Deposit Column KUBA

KUBA

- Galvanized steel sheet and powder coating ,incl. anti-graffiti protection
- L x w x h = 670 x 570 x 970 mm (not incl. pick-up)
- Column (lockable) can be opened to 90°. The front of the deposit column can be swung open by an authorized person, such as the caretaker who then has direct access to the collecting container. This means several rubbish sacks can be disposed of at once and the container can be filled to a higher degree. Protected by a EU patent.
- Note: KUBA-deposit column is also available without opening feature and with inspection door on the backside



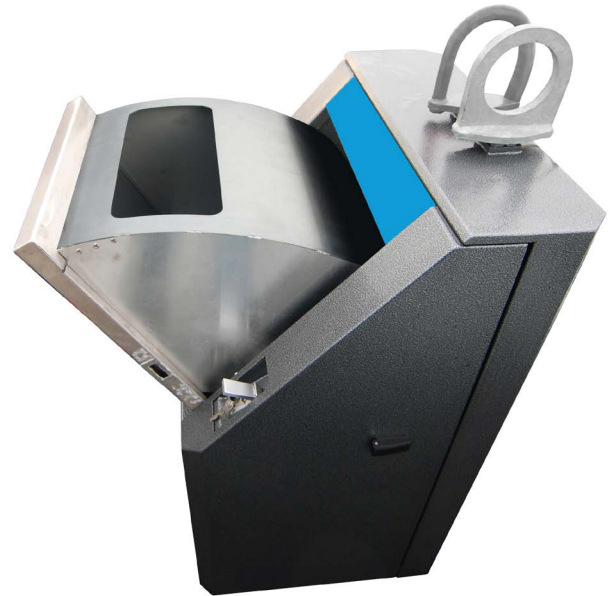
Deposit: Brushed stainless steel filling chute

▶ Underground System GeoTainer® Model GTS-L



- 3. Technical Details
- 3.2. Deposit Column KUBA

Deposit for paper and light packaging



Concealed deposit for paper in the filling chute



Deposit opening 400 x 150 mm



Concealed deposit for paper

- 3. Technical Details
- 3.2. Deposit column KUBA

Deposit for class



Synthetic (PE) flap Ø 165 mm (white, green or brown)



Rubber rosette Ø 180 mm (black)



Concealed deposit for glass, rubber rosette Ø 180 mm (black)



Concealed deposits for glass, rubber rosette Ø 180 mm (black), colour coding

► Underground System GeoTainer® Model GTS-L



- 3. Technical Details
- 3.2. Deposit column KUBA

Optional: Colour coding



- 3. Technical Details
- 3.2. Deposit column KUBA

Optional: Stickers / Lettering/ Acrylic glass plate

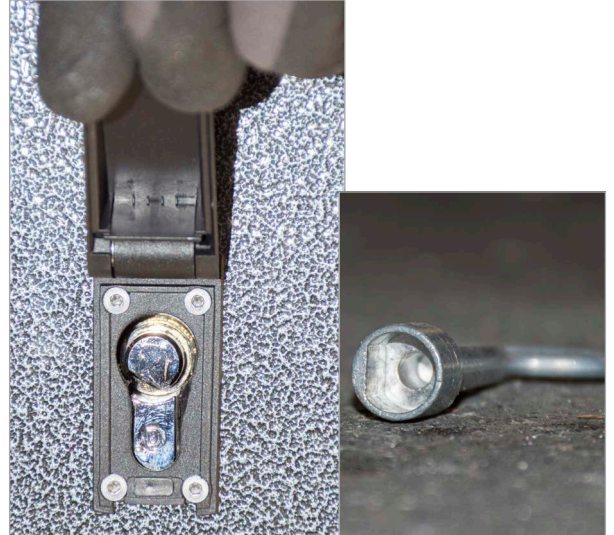


- 3. Technical Details
- 3.2. Deposit column KUBA

Optional:



Lockable deposit (incl. protective cap for lock)



Lockable deposit (incl. protective cap for lock)
„Halbmondschloss“



Electronic identification system



Bas relief or Braille

▶ Underground System GeoTainer® Model GTS-L



- 3. Technical Details
- 3.2. Deposit column KUBA

Optional:



"DeoPad" (for a more pleasant smell)



Insect protection

Powder Coating



Antique Black Bronze



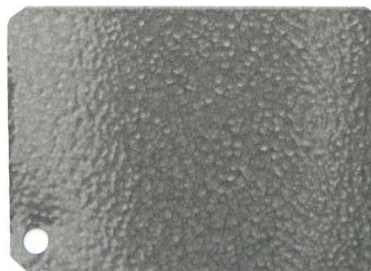
Antique Copper



Antique Gold



Antique Silver



Grey Hammer



Antique Green Copper

- 3. Technical Details
- 3.3. Deposit column RONDO

RONDO

- Stainless steel and powder coating incl. anti-graffiti protection
- L x w x h = 670 x 670 x 1000 mm (not incl. pick-up)
- Deposit hatch brushed stainless steel
- Column (lockable) can be opened to 90°. The front of the deposit column can be swung open by an authorized person, such as the caretaker who then has direct access to the collecting container. This means several rubbish sacks can be disposed of at once and the container can be filled to a higher degree.

Optional extras:

- Stickers, acrylic glass plate
- Lockable double-skin drum (catch lock available)
- Aluminium rain cover for lock
- Electronic identification system
- "DeoPad"
- Insect protection
- Note: RONDO-deposit column with foot pedal is only available without opening feature and with inspection door on the backside



with foot pedal and acrylic glass plate



Double-skin drum

▶ Underground System GeoTainer® Model GTS-L

- 3. Technical Details
- 3.3. Deposit column RONDO



Drum optics with deposit for paper



Electronic identification system

► Underground System GeoTainer® Model GTS-L



- 3. Technical Details
- 3.4. Deposit column RONDO

PICO

- Stainless steel and powder coating incl. anti-graffiti protection
 - L x w x h = 625 x 495 x 915 mm (not incl. pick-up)
 - Deposit for glass, synthetic (PE) flap Ø 165 mm in white, green or brown
- alternative: Rubber rosette Ø 180 mm in black

Optional extras:

- Stickers
- Foliation or colour design of the front cover



- 3. Technical Details
- 3.5. Pick-up Systems / Pavement Plateau

Containers with a 2 or 3 hook arrangement are lifted using a crane traverse. The movable hook must also be raised during the lifting process. The trap doors are operated by chains or a traverse leverage system connected to the movable hook. When this hook is lowered the trap doors automatically open.



2-hook



3-hook



1-hook



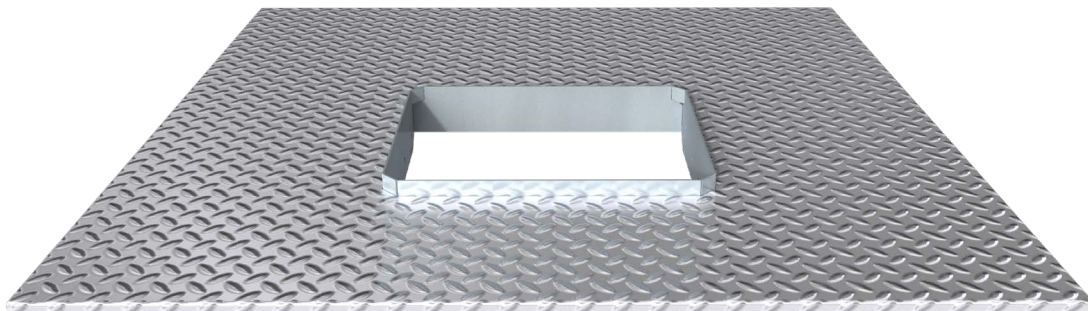
Pick-up "mushroom"



Pick-up "mushroom" with anti rotation

Pavement Plateau

Stud plate made from 4/6 mm steel sheet, hot-dip galvanized according to EN ISO 1461.



► Underground System GeoTainer® Model GTS-L



- 3. Technical Details
- 3.6. Safety Platform

The Underground System is equipped with a safety platform that automatically closes the pit during emptying and guarantees safety requirements are met. The load capacity (200 kg) complies with the requirements set out in DIN EN 13071-2:2008 i.e. minimum load capacity 150 kg.

When the collecting container is lifted, the safety platform is raised by a set of counterbalance weights which move up and down in a restricted space between the frame of the safety platform and the concrete container. This means they are guided and cannot jam.

When the collecting container is set down on the safety platform, contacts release the locking mechanism thus allowing the safety platform to return to its original position.

The top frame of the safety platform helps to align the collecting container when it is being lowered back into the concrete outer. It also helps prevent surface water from seeping into the system - thanks to the overlap construction and circumferential drainage.

The cover of the safety platform can be removed or folded back for cleaning purposes or maintenance work. The safety platform is made of galvanized steel sheet.

The height of the safety platform can be adjusted. This means for example that a 3.0 m³ collecting container can be set in a 5.0 m³ concrete outer.

In addition - and this applies to all models - the safety platform can be adjusted by +/- 10 mm in order to compensate for tolerances or unevenness..



► Underground System GeoTainer® Model GTS-L



- 3. Technical Details
- 3.7. Collecting container

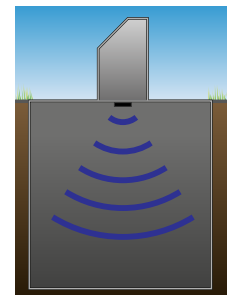
The collecting container is entirely made of components that are screwed together which makes it easy to alter the size or to exchange any damaged parts. The top of the container is covered by the pavement plateau that is safe to walk on; a basin-like trap door or doors are located at the bottom.

The trap doors are basin-like in shape and welded watertight so they are able to retain any residual fluid. The total collection capacity of the trap door(s) is 150 litres which conforms to the regulations set out in EN 13071-2 § 4.2 (minimum 2% of the nominal volume).

The trap doors have an optimised opening angle and are operated by a traverse leverage system. containers used to collect paper, household waste, biodeg Traverse und Gestänge geöffnet bzw. geschlossen. The bottom of the container is reinforced by a base frame. The inside walls of the container are smooth to avoid any material getting caught.

The side walls of the container, the base frame and trap doors are made of steel sheet.

Prepared for installation of level instruments.



Traverse/leverage System on the outside



Collecting of glass: chains, trap doors and bottom section of walls (up to 1 m) with noise insulation

► Underground System GeoTainer® Model GTS-L



- 3. Technical Details
- 3.8. Concrete Container

The reinforced concrete outer is manufactured according to DIN EN 206-1 and DIN 1045-1. It is a high quality product, C35/45 and is extremely pressure-resistant. In addition it is resistant to carbonation-induced corrosion, frost and natural chemical reactions.

A pump sump is let into the floor so that any liquid can easily be pumped out. Dimensions (Ø x d): 200 x 40 mm.

Four anchor straps are inbuilt to facilitate transport handling and installation. As a standard feature they are fixed to the side walls at the top of the container.

If several containers are to be arranged in the form of a square, the anchor straps can be screwed into the threaded sleeves which are located on top of the container.

Drill holes and pockets ensure that any rainwater drains away.

Optional extra: The concrete outer is available with a safeguard against flotation due to buoyancy.



Concrete outer with four anchor straps



Optional extra: with a safeguard against flotation due to buoyancy



Four anchor straps facilitate transport handling and installation

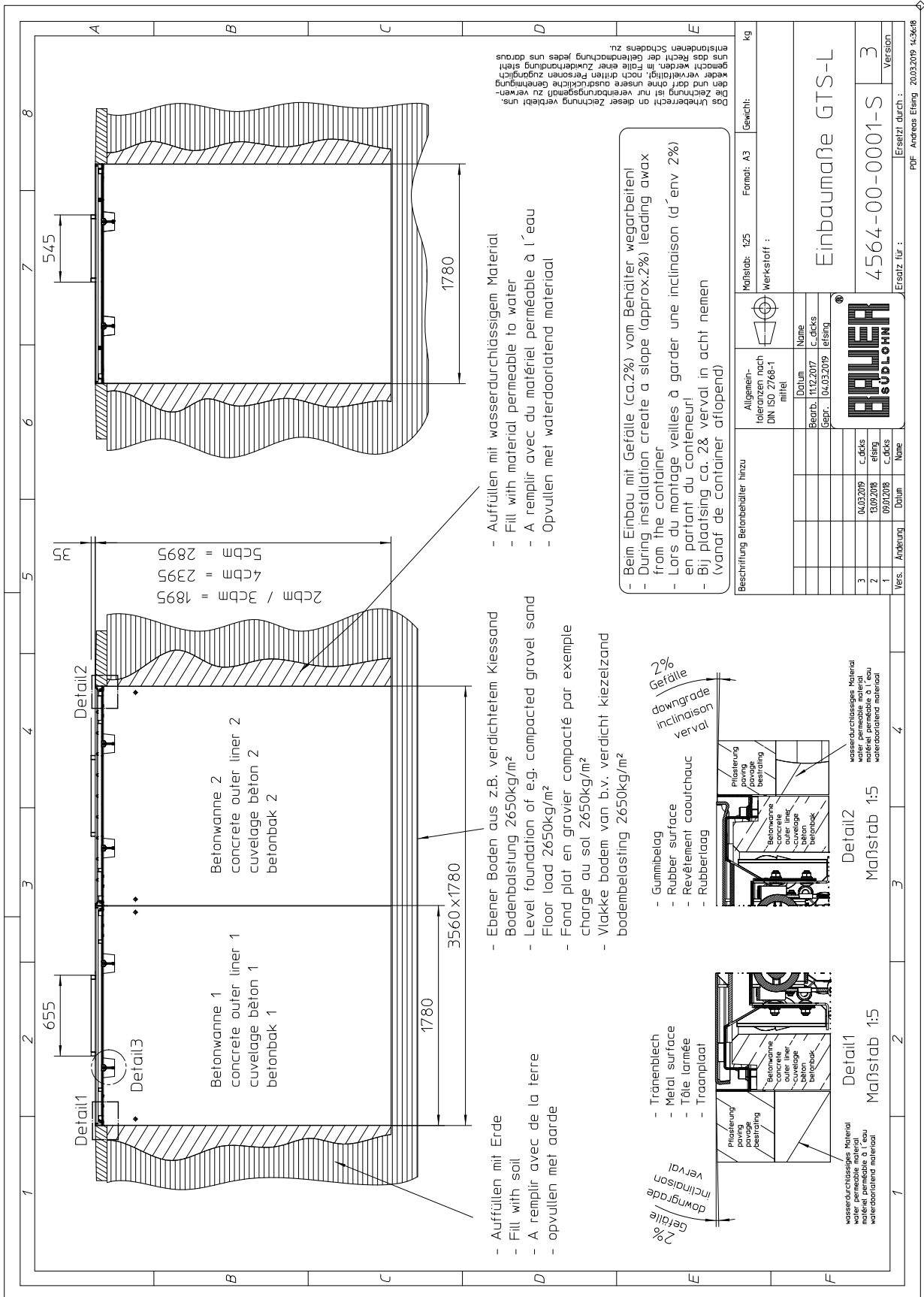


Optional extra: if required, please note when placing an order: Four anchor straps for top lifting. Containers can be set down side by side

4. Transport and Installation



4. Transport and Installation
4.1. Installation Drawing



kg	Format: A3	Gewicht:
Maßstab: 1:25		werksstoff:
Allgemein-toleranzen nach DIN ISO 2768-1 mittel		
Datum		Name
Bearb. 11/2017		C.dicks
Gepr. 04.03.2019		leising
BAUER SÜDLÖHN		
Ersatz für:		Ersetzt durch:
Einbaumaße GTS-L		Version
4564-00-0001-S		3
Vers.	Änderung	Datum
1		04.03.2019
2		13.09.2018
3		09.07.2018

► Underground System GeoTainer® Model GTS-L

5. Emptying





















► **BAUER GmbH**

Eichendorffstr. 62
DE-46354 Südlohn
Germany

Tel. +49 2862 709 - 0
Fax +49 2862 709 - 156
info@bauer-suedlohn.de

www.geotainer.com
www.bauer-suedlohn.de

